

## Zen Design Stipple

Polyamide carpet, known for its durability, can be used in any room. One of the most important advantages is the fact that the carpet fibers can stand up to a lot of wear and tear. This makes the use of nylon carpeting especially practical in areas where there is a lot of foot traffic since the synthetic fibers hold their shape longer than many other types of fibers. As a result, the pile of the polyamide carpeting looks new and fresh for many more years than other carpeting selections.

### APPLICATIONS

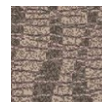
- Bedroom
- Living Room

### TECHNICAL SPECIFICATIONS

Secondary backing:	Woven Synthetic Secondary Backing
Quality code:	Z24
Manufacturing process:	Tufted
Manufacturing process (hospitality):	1/10" 1/10"
Pile composition:	PA
Pile composition (hospitality):	PA
Fire behaviour:	Bfl-s1
EN 1307 Classification:	Cl. 33 Commercial Heavy



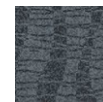
220 / Zen Design Stipple / Acorn



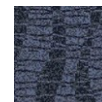
220  
Acorn



260  
Camel



780  
Steel



790  
Midnight



840  
Moonshine