

# TARALAY IMPRESSION & UNI

gerflor.com



**Gerflor**<sup>®</sup>  
theflooringgroup





# TARALAY IMPRESSION



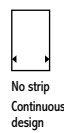
0373 - Noma Ice



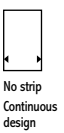
0723 - Charme Pecan



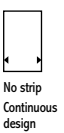
0719 - Infinity Lichen



0068 - Renzo Pecan



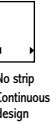
0025 - Renzo Taupe



0726 - Sycamore Dark



0519 - Noma Beige



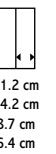
0680 - Infinity Greige



0725 - Sycamore Light Brown



0773 - Portobello



0734 - Loft Chestnut



0371 - Noma Rustic



1314 - Walnut brown

# TARALAY IMPRESSION



0538 - Habana Vinales



0722 - Herringbone Blond



0522 - Habana Trinidad



0724 - Herringbone Chatain



0721 - Charme Natural

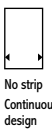




0528 - Walnut Cream



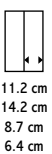
0720 - Infinity Aube



0727 - Sycamore Vanilla



0760 - Moon Island



0671 - Loft Light Brown

# TARALAY IMPRESSION & UNI



**0769 - Mohair White**



**0523 - Cemento Genova**



**0543 - Cemento Brescia**



**0767 - Mohair Natural**



**0524 - Cemento Capri**



**0766 - Mohair Dark**



**0525 - Cemento Modena**



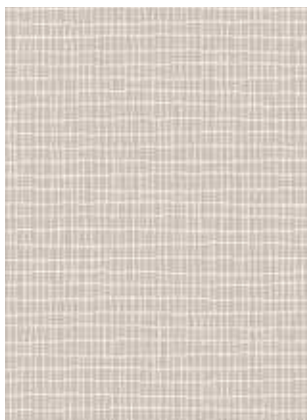
**0770 - Gentlemen Clear**



**0771 - Gentlemen Grey**



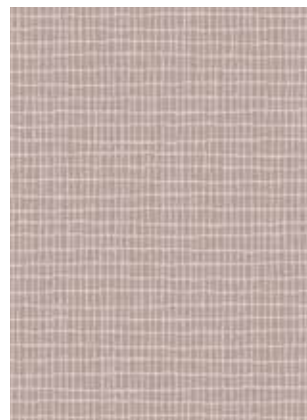
**0772 - Gentlemen Coffee**



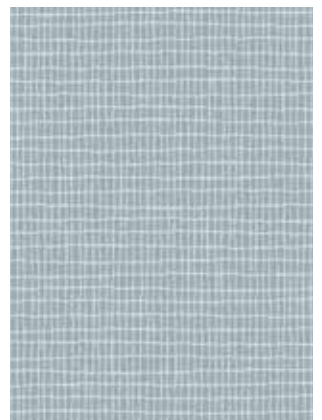
**0774 - Trame Clear**



**0776 - Trame Beige**



**0777 - Trame Rose**



**0775 - Trame Blue**

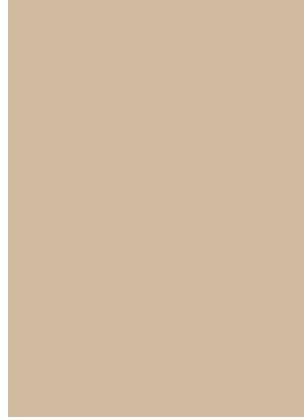




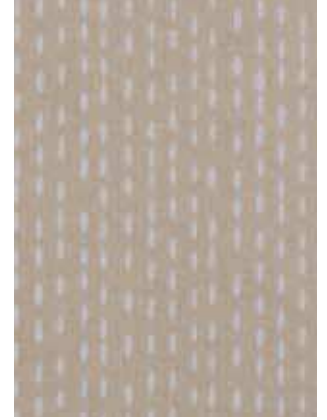
**0730 - Corner** Light Beige



**0756 - Kubes** Beige



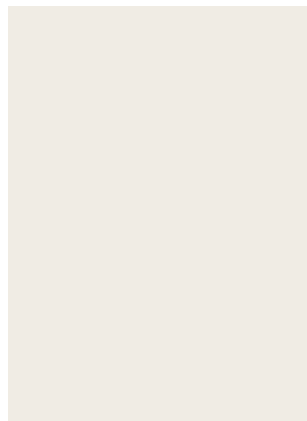
**6267 - Uni** Beige



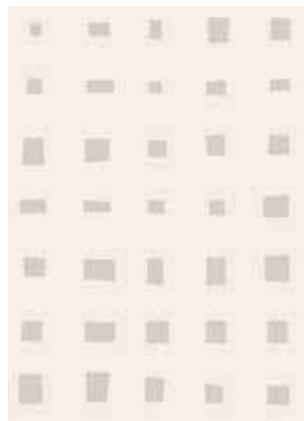
**0736 - Rice** Champagne



**0728 - Corner** Offwhite



**6273 - Uni** White



**0755 - Kubes** White



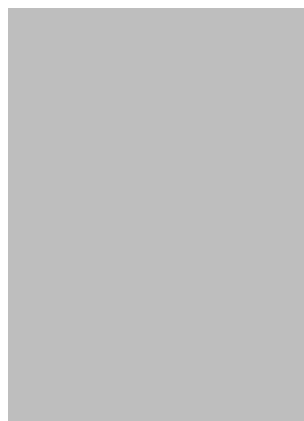
**0763 - Rice** Greige



**0745 - Nest** Metal



**0737 - Rice** Souris



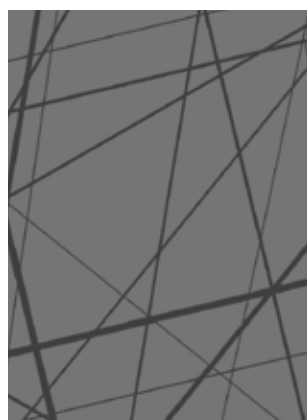
**6271 - Uni** Grey



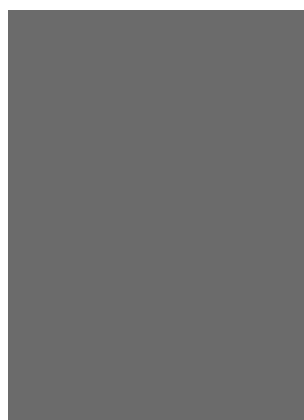
**0729 - Corner** Metal



**0753 - Kubes** Grey



**0746 - Nest** Black



**0778 - Uni** Anthracite

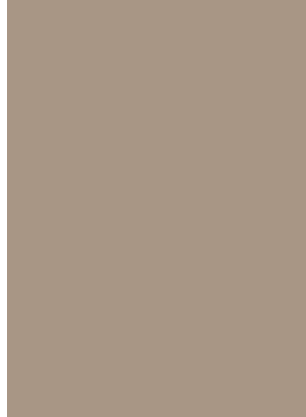


**0744 - Stars** Anthracite

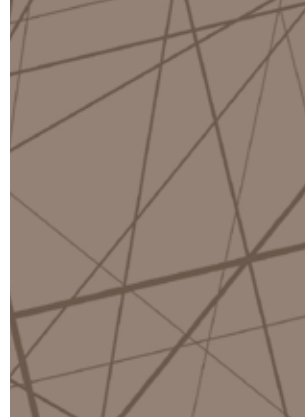
# TARALAY IMPRESSION & UNI



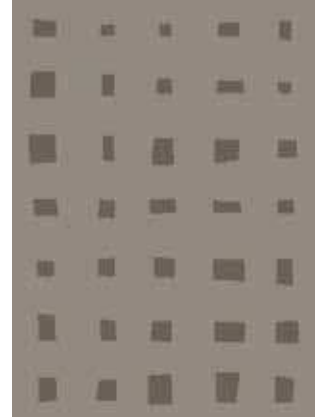
0762 - Rice Brown



6265 - Uni Brown



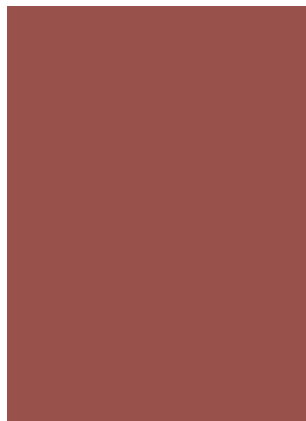
0765 - Nest Taupe



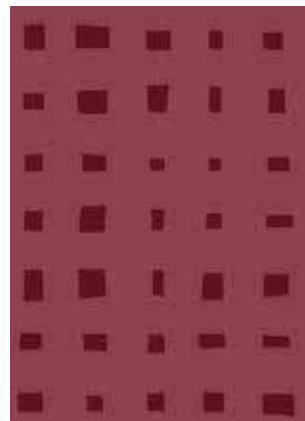
0751 - Kubes Taupe



0741 - Corner Tomette



6270 - Uni Tomette



0748 - Kubes Burgundy



0757 - Rice Coquelicot



0738 - Rice Copper



0733 - Corner Copper



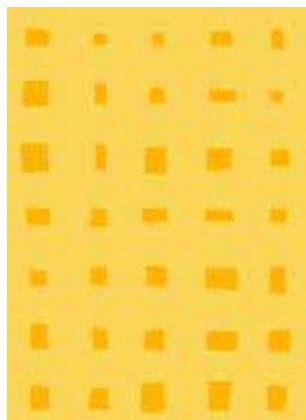
0752 - Kubes Gold



0759 - Rice Mustard



6268 - Uni Sun



0750 - Kubes Sun



6269 - Uni Orange



0764 - Stars Orange



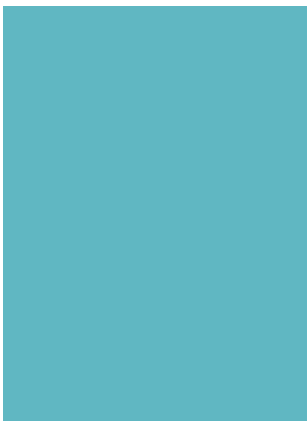
**0739 - Corner Anis**



**6263 - Uni Anis**



**0735 - Rice Light Green**



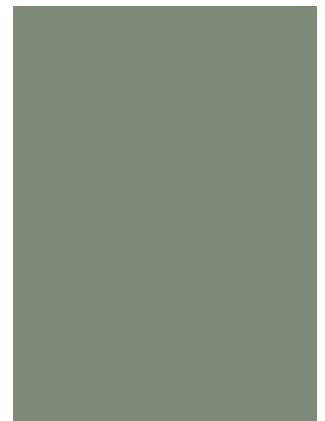
**6262 - Uni Turquoise**



**0740 - Corner Turquoise**



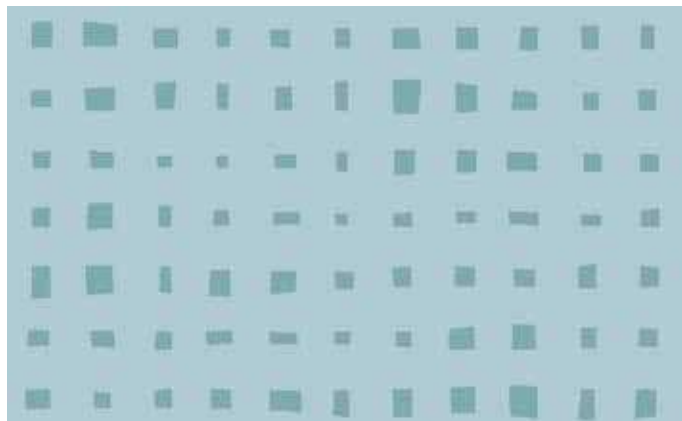
**0747 - Kubes Olive**



**6264 - Uni Olive**



**0758 - Rice Sea**



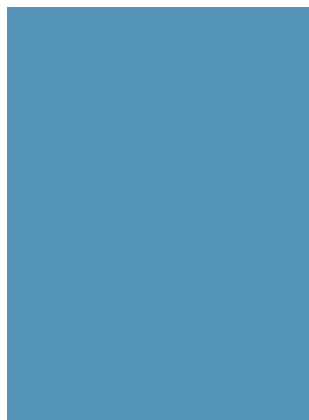
**0749 - Kubes Sky**



**0743 - Stars Baltique**



**0754 - Kubes Blue**



**6261 - Uni Blue**



**0732 - Corner Dark Blue**



**6260 - Uni Dark Blue**

| TARALAY IMPRESSION  |   | TARALAY UNI |
|---|---|-------------|
| COMPACT   | COMFORT   | COMFORT     |
| Wood, Cemento, Mohair, Nest, Stars, Gentlemen, Trame, Corner, Kubes, Rice | Wood, Cemento, Mohair, Nest, Stars, Gentlemen, Trame, Corner, Kubes, Rice | Uni         |

## DESCRIPTION

|                        |                       |             |             |             |             |
|------------------------|-----------------------|-------------|-------------|-------------|-------------|
| Total thickness        | EN ISO 24346 [EN 428] | mm          | 2.00        | 3.35        | 3.00        |
|                        | ASTM F386-02          | inch        | 0.08        | 0.13        | 0.1         |
| Thickness of wearlayer | EN ISO 24340 [EN 429] | mm          | 0.70        | 0.65        | 0.65        |
|                        | ASTM F410-02          | inch        | 0.028       | 0.026       | 0.026       |
| Weight                 | EN ISO 23997 [EN 430] | g/sq.m      | 2635        | 2825        | 2300        |
| Width/length of sheet  | EN ISO 24341 [EN 426] | cm / lm     | 200 / 25    | 200 / 25    | 200 / 25    |
|                        | -                     | feet - inch | 6' 6" / 82' | 6' 6" / 82' | 6' 6" / 82' |

## CLASSIFICATION

|  |                       |       |                       |         |         |
|--|-----------------------|-------|-----------------------|---------|---------|
| Norm/product specification                             | -                     | -     | EN ISO 10582 [EN 649] | EN 651  | EN 651  |
| European classification                                | EN ISO 10874 [EN 685] | class | 34 - 43               | 34 - 42 | 34 - 42 |
| Fire rating  | EN 13 501-1           | class | Bfl-s1                | Bfl-s1  | Cfl-s1  |
| Static electrical propensity                           | EN 1815               | kV    | < 2                   | < 2     | < 2     |
| Slip resistance wet: ramp test with oil <sup>(1)</sup> | DIN 51 130            | class | R10                   | R10     | R10     |

## PERFORMANCES

|   |                         |                 |                       |                       |                       |
|---|-------------------------|-----------------|-----------------------|-----------------------|-----------------------|
| Wear resistance   | EN 660.2                | mm <sup>3</sup> | ≤ 2.0                 | ≤ 2.0                 | ≤ 2.0                 |
| Wear group  | NF 189                  | group           | T                     | T                     | T                     |
| Type binder content   | EN ISO 10582            | Type            | I                     | -                     | -                     |
| Dimensional stability   | EN ISO 23999 [EN 434]   | %               | ≤ 0.40                | ≤ 0.40                | ≤ 0.40                |
| Residual indentation (requirement)                                  | EN ISO 24343-1 [EN 433] | mm              | ≤ 0.10                | ≤ 0.20                | ≤ 0.20                |
| Residual indentation (average measured value)                       | -                       | mm              | ≈ 0.03                | ≈ 0.08                | ≈ 0.11                |
| Impact sound insulation   | EN ISO 717-2            | dB              | 8                     | 19                    | 17                    |
| Castor chair test (type W)  | ISO 4918 [EN 425]       | -               | OK                    | OK                    | OK                    |
| Thermal conductivity  | EN ISO 10456 [EN 12524] | W/(m.K)         | 0.25                  | 0.25                  | 0.25                  |
| Colour fastness   | EN 20 105 - B02         | degree          | ≥ 6                   | ≥ 6                   | ≥ 6                   |
| Surface treatment   | -                       | -               | Protecsol® 2          | Protecsol® 2          | Protecsol®            |
| Chemical products resistance  | EN ISO 26987 [EN 423]   | -               | OK                    | OK                    | OK                    |
| Anti-bacterial activity (E. coli - S. aureus - MRSA) <sup>(2)</sup> | ISO 22196               | -               | > 99% inhibits growth | > 99% inhibits growth | > 99% inhibits growth |

## ENVIRONMENT / INDOOR QUALITY AIR

|                    |             |                   |             |             |             |
|--------------------|-------------|-------------------|-------------|-------------|-------------|
| TVOC after 28 days | ISO 16000-6 | µg/m <sup>3</sup> | < 10        | < 10        | < 10        |
| Certification      | -           | -                 | Floorscore® | Floorscore® | Floorscore® |

## CE marking

|    |          |   |  |  |  |
|----|----------|---|--|--|--|
| CE | EN 14041 | - |  |  |  |
|    |          | - |  |  |  |

(1) For lifetime sustainable wet resistance, please refer to Tarasafe ranges  
 (2) The implementation of an effective cleaning regime is the best defence against infection

Product description and technical data sheet available in various languages. See our Gerflor Country websites.

Technical data sheets and product descriptions for **TARALAY IMPRESSION COMPACT and COMFORT PLUS** (0.9mm wearlayer) available in the Taralay Impression & Uni product guide.

Installation and Maintenance Guidelines, Complementary ranges available on our Gerflor website.

Rubber leaves indelible stains on vinyl floorings: do not use mats with rubber backing and replace tubular furniture feet with those made of PVC or polyamide. Place mats of sufficient length at entrances to reduce outside sources of dirt.

**IMPORTANT:** The information contained in this document is valid from 01/04/2017 and is subject to change at any time without notice. In the context of constantly changing technology, our customers are responsible, prior to any use, for checking with us that this document is the version in force.

## TARALAY IMPRESSION & UNI, LESS SPEAKING FOR MORE ACTIONS

|  |                                      |   |  |   |
|--|--------------------------------------|---|--|---|
| <p><b>COMPOSITION</b><br/>100% REACH compliant</p> | <p><b>RECYCLABILITY</b><br/>100%</p> | <p><b>INDOOR AIR QUALITY</b><br/>100 times lower than norm requirements (TVOC &lt; 10 µg/m<sup>3</sup> after 28 days)</p> | <p><b>LCA</b><br/>Eco-designed according to a product-specific life cycle analysis</p> | <p><b>WELLNESS</b><br/>Anti slip R10<br/>Comfort version:<br/>Walking comfort &lt; 65 dB (best certification) and impact sound insulation - 19 dB</p> |
|--|--------------------------------------|---|--|---|

Be CONNECTED!

www.gerflor.com