

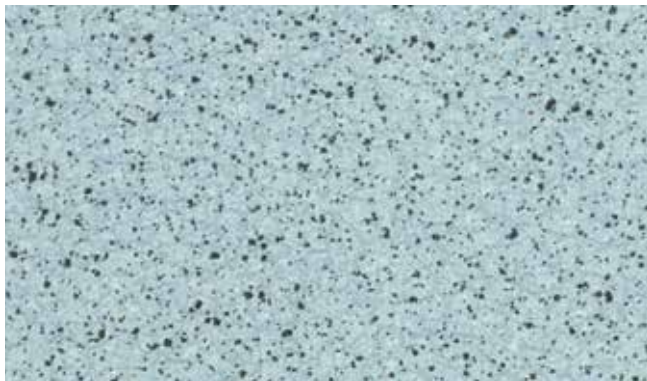
TIMBERLINE

gerflor.com



Gerflor[®]
theflooringgroup

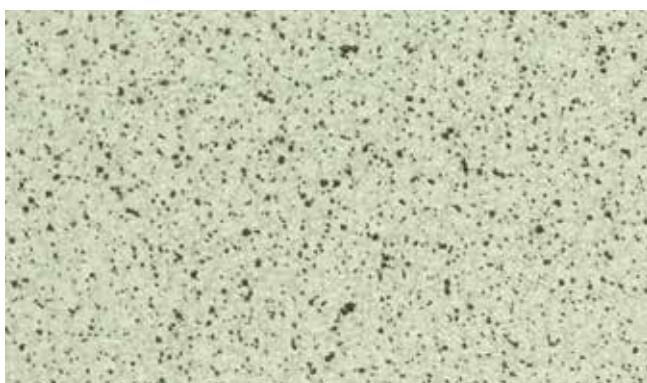
TIMBERLINE



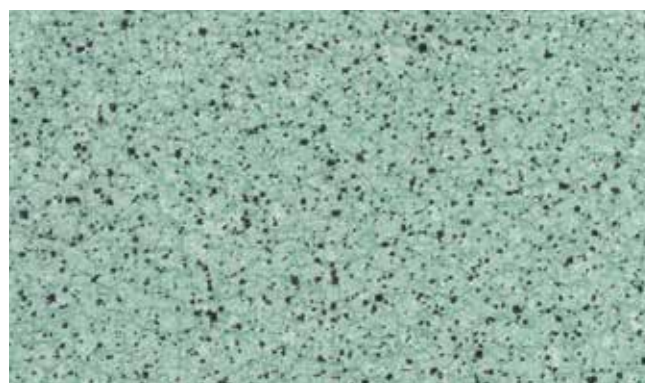
2177 Pixel Sky



2182 Pixel Ocean



2180 Pixel Light Green



2181 Pixel Meadow



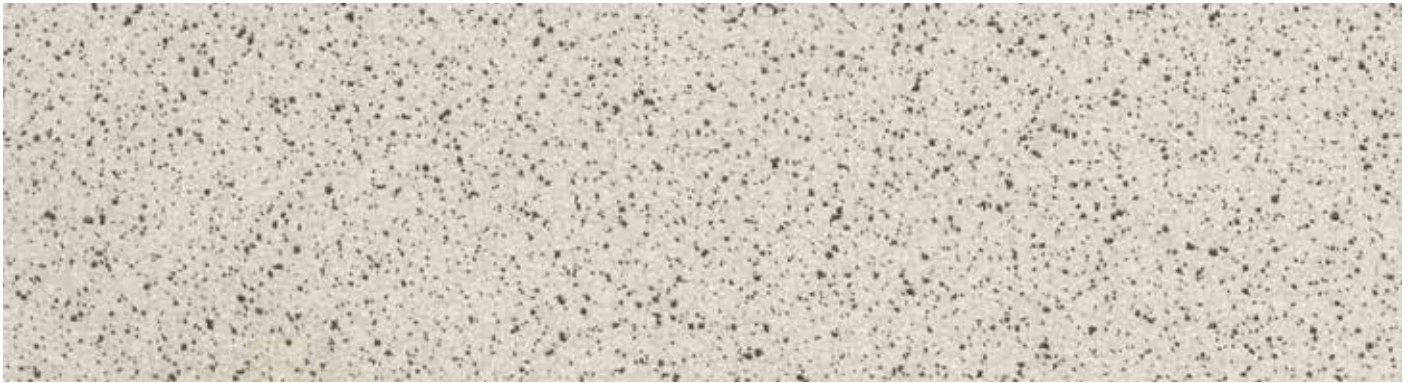
0621 Pixel Vanilla



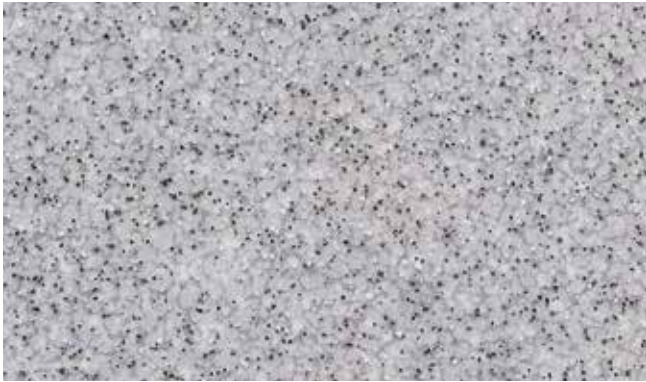
2178 Pixel Paprika



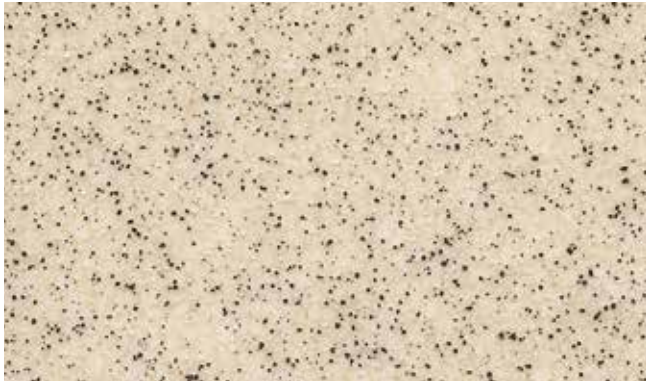
2188 Pixel Raspberry



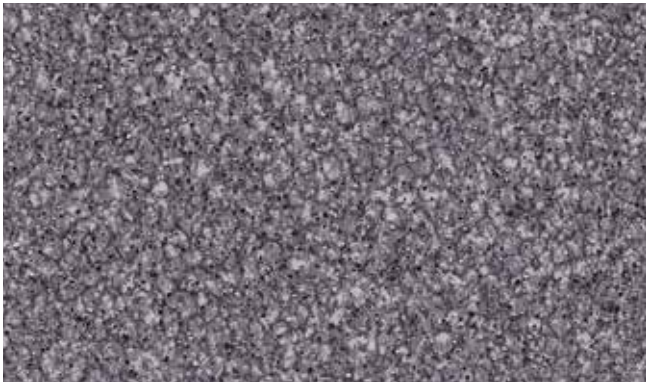
2175 Pixel Clear



0597 Pixel Silver



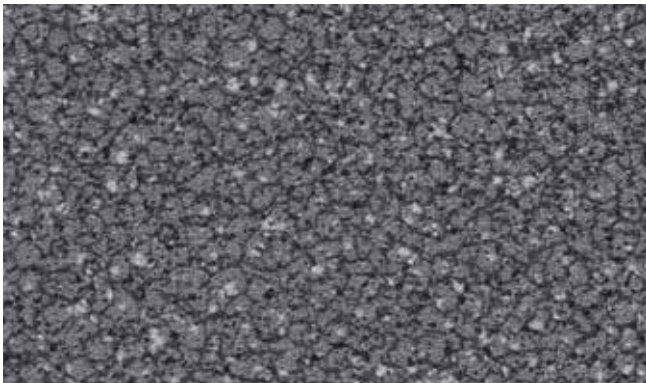
0639 Pixel Sand



0632 Pixel Anthracite



2176 Pixel Taupe



2179 Pixel Black



2183 Pixel Earth

TIMBERLINE



0137 Aurore Natural



0422 Maple Light



0492 Cabana Oak Brown



0449 Toronto Miel



0847 Oak Light



No strip
Continuous
design

0452 Oak Select Medium



Plank sizes: see details in the attached brochure page 23



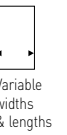
2012 Sherwood Clear



0669 Chene Light



0476 Noma Miel



2010 Bruges Naturel



2007 Cognac Blond

TIMBERLINE



Variable widths & lengths

1893 Harbor Blue



1751 Timber Grey



16.6 cm

0542 Whitewashed Oak Warm Grey



2006 Cognac Pearl



10 cm

0562 Walnut Grey Brown



2017 Sherwood Grey



25 cm

2015 Sherwood Brown



0502 Oak Select Grey

No s
Cont
desi



16 cm



16.6 cm

1451 Noma Kola



20 cm



16.6 cm

1518 Factory White

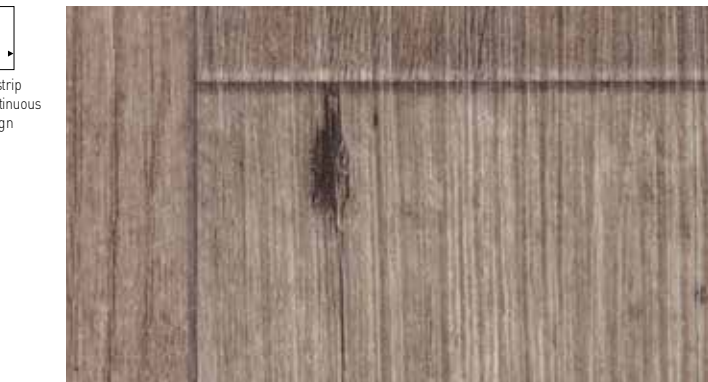


25 cm



Variable widths & lengths

1900 Harbor Nature



10 cm



Variable widths & lengths

0432 Rustic Pine Warm Grey

1971 Bruges Clear

TIMBERLINE

DESCRIPTION

Total thickness	EN ISO 24346 [EN 428]	mm	2.00
Wearlayer thickness	EN ISO 24340 [EN 429]	mm	0.70
Weight	EN ISO 23997 [EN 430]	g/sq.m	2560
Width/length of sheet	EN ISO 24341 [EN 426]	cm/lm	200 / 20 - 400 / 20

CLASSIFICATION

Norm/product specification	-	-	EN ISO 10582 [EN 649]
European classification	EN ISO 10874 [EN 685]	class	34-43
Fire rating	EN 13501-1	class	Bfl - s1
Static electrical propensity	EN 1815	kV	< 2
Slip resistance ⁽¹⁾	DIN 51130	class	R10

PERFORMANCE

Wear resistance	EN 660.2	mm ³	≤ 2.0
Wear group	NF 189	group	T
Type binder content	ISO 10582	type	I
Dimensional stability	EN ISO 23999 [EN 434]	%	≤ 0.40
Residual indentation (requirement)	EN ISO 24343-1 [EN 433]	mm	≤ 0.10
Residual indentation (measure)	-	mm	≈ 0.05
Impact sound insulation	EN ISO 717-2	dB	≈ 6
Castor chair test (type W)	ISO 4918 [EN 425]	-	OK
Thermal conductivity	EN ISO 10456 [EN 12524]	W/(m.K)	0.25
Colour fastness	EN 20 105 - B02	degree	≥ 6
Surface treatment	-	-	PUR+
Chemical products resistance ⁽²⁾	EN ISO 26987 [EN 423]	-	OK

ENVIRONMENT / INDOOR AIR QUALITY

TVOC after 28 days	ISO 16000-6	µg/m ³	< 100
--------------------	-------------	-------------------	-------

CE marking

CE	EN 14041	-	
		-	

(1) For lifetime sustainable wet resistance, please refer to Tarasafe ranges.

(2) Regarding the resistance to chemicals, please download the corresponding leaflet from our website.

Product description and technical data sheet available in various languages. See our Gerflor websites.

Installation and Maintenance Guidelines, Complementary ranges available on our Gerflor website.

Rubber leaves indelible stains on vinyl floorings: do not use mats with rubber backing and replace tubular furniture feet with those made of PVC or polyamide. Place mats of sufficient length at entrances to reduce outside sources of dirt.

IMPORTANT: The information contained in this document is valid from 01/01/2019 and is subject to change at any time without notice. In the context of constantly changing technology, our customers are responsible, prior to any use, for checking with us that this document is the version in force.

TIMBERLINE, ACTIONS SPEAK LOUDER THAN WORDS



COMPOSITION
100% REACH



RECYCLABILITY
100%



INDOOR AIR QUALITY
10 times lower than norm requirements (TVOC < 100 µg/m³ after 28 days)



LCA
Eco-designed according to a product-specific life cycle analysis



WELLNESS
Anti slip R10

Be connected!



#Gerflor



www.gerflor.com