

Pointland

An Axminster carpet is by far the most practical floorcovering available today, boasting performance qualities that include durability, strength, appearance retention, cleanability, safety and comfort. Our Axminster qualities are woven on a state-of-the-art loom equipped with the latest technology. We can produce the most complex of carpets without compromising on versatility, flexibility and service. The special weaving process where the pile and the backing materials are woven together in a single operation ensures a dense, durable and extremely strong carpet especially designed to withstand the wear and tear of high traffic areas. With Class 33 Heavy Commercial ratings and Bfl flammability rated, our Walk of Fame Axminster carpet qualities offer complete peace of mind in even the busiest of environments. As well as our diverse standard collection of styles, we also have a bespoke service that allows our customers to let their imaginations run wild and create their very own beautiful Axminster carpet designs.

APPLICATIONS

- Bedroom
- Living Room

TECHNICAL SPECIFICATIONS

Secondary backing:

Quality code: A7

Manufacturing process: Woven

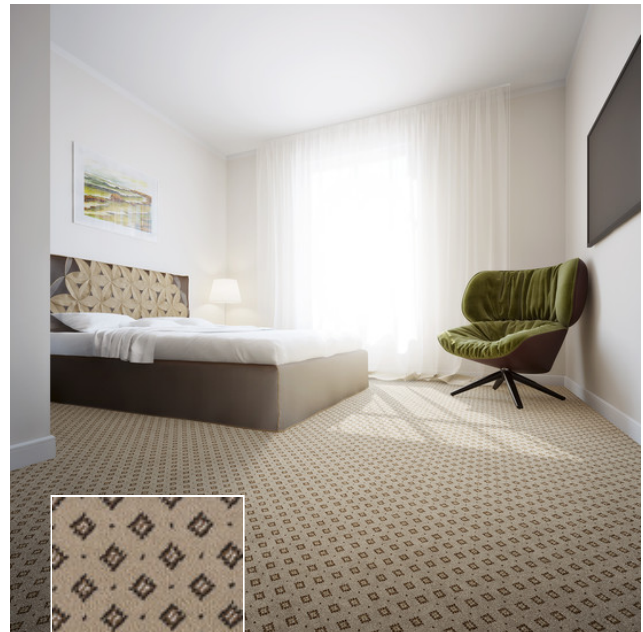
Manufacturing process (hospitality): Axminster

Pile composition: 80% WO - 20% PA

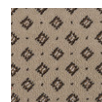
Pile composition (hospitality): 80% WO - 20% PA

Fire behaviour: Bfl-s1

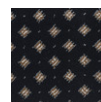
EN 1307 Classification: Cl. 33 Commercial Heavy



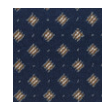
581 / Pointland / Reseda 1



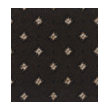
581
Reseda 1



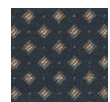
588



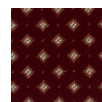
593
Moss 3



587



590
Moss



596

